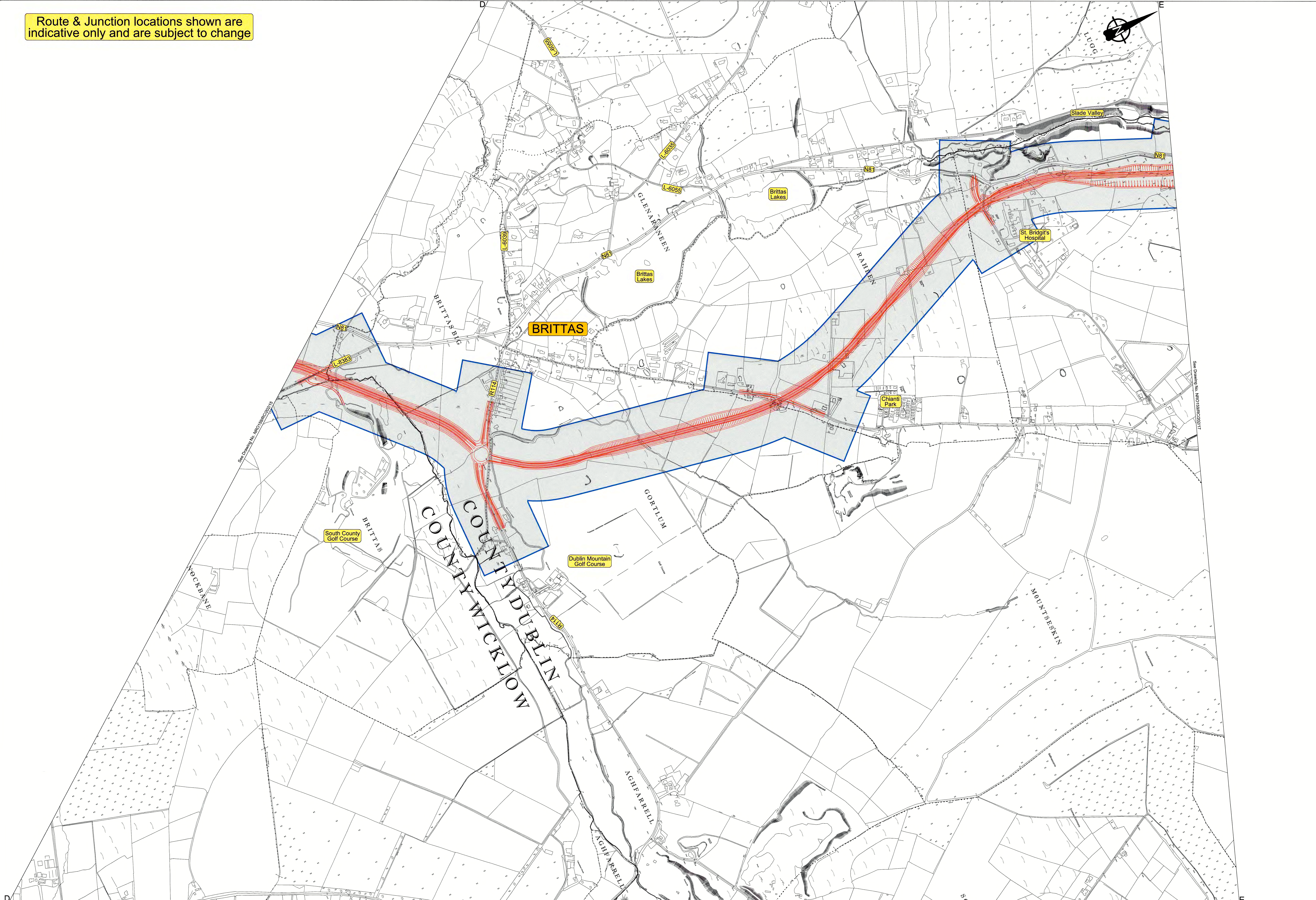


Route & Junction locations shown are indicative only and are subject to change



D

Plan

E

<p>Legend:</p> <p> Preferred Route Corridor</p> <p><small>©Ordnance Survey Ireland. All rights reserved. Licence Number 2016/26/CCMA/Kildare County Council.</small></p>	<p>ENGINEERS IRELAND</p> <p><small>cpd ACCREDITED EMPLOYER</small></p>	<p>KILDARE nro</p> <p><small>NATIONAL R0ADS OFFICE Maudits, Nas, Co. Kildare, Ireland Tel: +353-45-88890, Fax: +353-45-87945, e-mail: kco@kildareroads.com</small></p>	<p>NALL MORRISSEY DIRECTOR of SERVICES Roads, Transportation & Public Safety</p> <p>DAVID O' GRADY BE MSc Hcip CEng MEd ACTING SENIOR ENGINEER</p>	<table border="1"> <thead> <tr> <th>REVISIONS</th> <th>1</th> <th>May '16</th> <th>Published Route Corridor</th> </tr> <tr> <th>Suffix</th> <th>Initials</th> <th>Date</th> <th>Description</th> </tr> </thead> <tbody> <tr> <td> </td> <td> </td> <td> </td> <td> </td> </tr> </tbody> </table>	REVISIONS	1	May '16	Published Route Corridor	Suffix	Initials	Date	Description					<p>STAGE</p> <p><input type="checkbox"/> PRELIMINARY</p> <p><input type="checkbox"/> N.R.A. APPROVAL</p> <p><input type="checkbox"/> TENDER</p> <p><input type="checkbox"/> CONTRACT</p>	<p>PROJECT N81Hollywood Cross to Tallaght Road Improvement Scheme</p> <p>DRAWING Preferred Route Corridor OSI Vector Mapping</p> <p><small>Filename: N:\Projects\NRO159\Drawings\200RS\202 NRO159/RC/202/16</small></p>	<p>SHEET 5 - 6</p> <p><small>Scale: 1: 5,000 @ A0 Date: May, 2016 Drawn by: B.K. Checked: A.K. Revision: 0</small></p>
REVISIONS	1	May '16	Published Route Corridor																
Suffix	Initials	Date	Description																